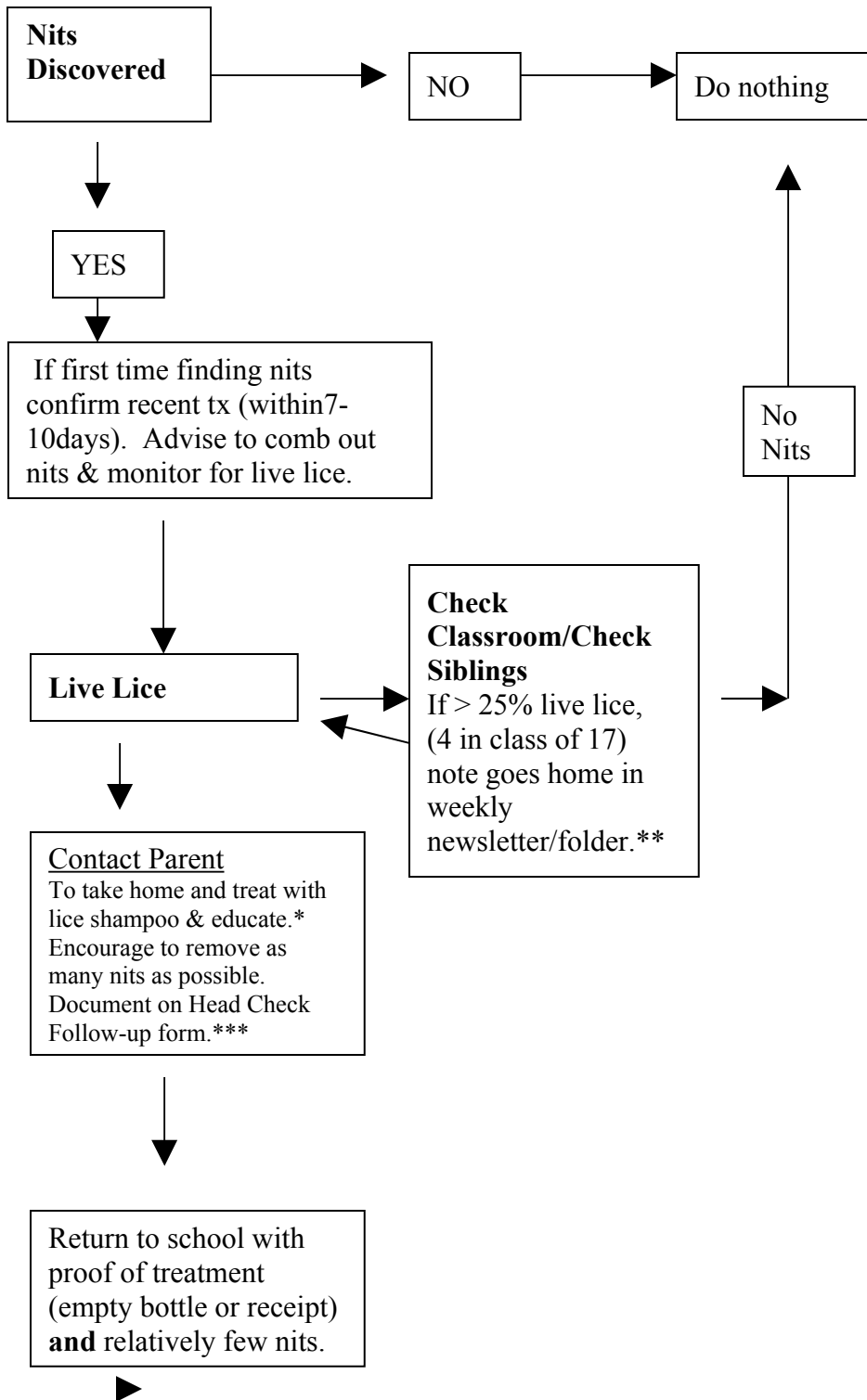


NCSD Head Lice Guidelines



*Send home **CDC Treating Head Lice** handout.
 **Elementary schools: check classroom and send home in next parent newsletter, Notification of Head Lice in the School Setting if >25%.
 ***Document on Head Check Follow-up form positive cases.
 Secondary schools, check close contacts as needed.

Chronic Recurrent Head Lice



If more than THREE times of documented treatment within three months, refer to doctor for possible resistant case. They must remove **most if not all nits** before they can return to school.

Return to school **AS SOON AS POSSIBLE**.

If more than four times, refer to DFS for follow-up of Low Level Neglect, home environment and excessive absences.